

After installation, check the correct operation of all elements.

KIA Sportage

HOOD GAS STRUTS
Installation Instructions



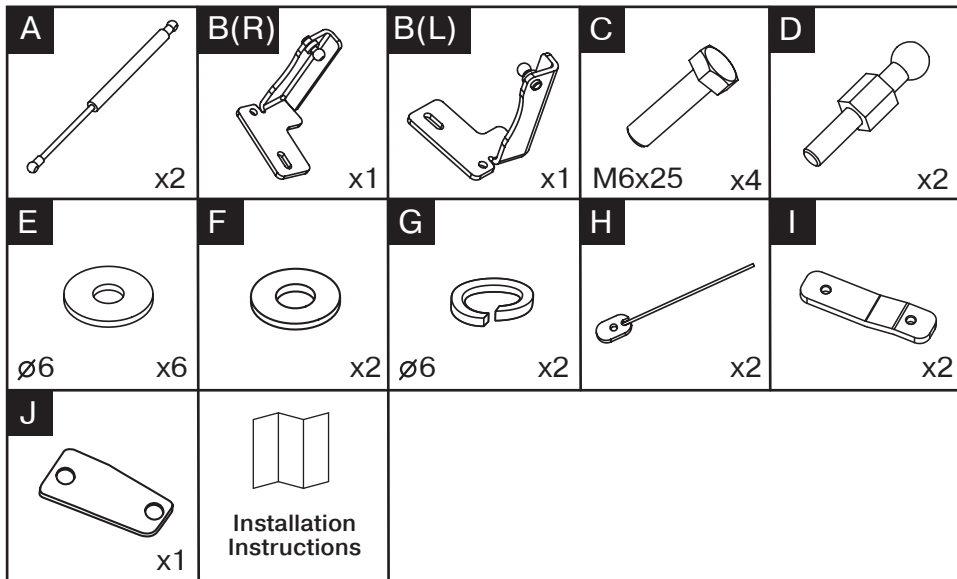
Model year: 2016-2018, 2018-

Part No.: 2A.ST.2806.1

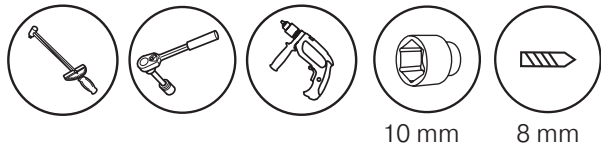
Compatibility: all types

Weight: 1 kg

Installation time: 30 min



Required Tools



⚠ Attention!

Before installation of gas struts, open the hood and check that there is no additional equipment installed in engine bay which can block installation.

